



# Punta Cana, Dominican Republic

From infants to teens and every kid in between



## CLUB FAMILY ROOMS

Available as:  
• Standard  
360 sq. ft.  
63 sq. ft balcony  
King sized bed  
Additional bedding: 2 twin convertible sofas  
Maximum occupancy: 5 persons  
Deluxe and club family rooms may adjoin to accommodate 7 persons



## CLUB ROOMS

Available as:  
• Oceanview  
• Gardenview  
312 sq. ft.  
54 sq. ft. balcony  
King sized bed converts into 2 twin beds  
Maximum occupancy: 2 adults, 1 baby

## A taste of what you'll find at Punta Cana



## ACCOMMODATIONS

Located beside a lagoon surrounded by a magnificent grove of coconut palms and stretching along white sand beaches, this idyllic Club Med resort flourishes in the shade of tropical vegetation. Punta Cana is a children's paradise that rests along a beautiful beach surrounded by a coral reef. All 553 air-conditioned rooms feature: telephone, television, clock radio/cd player, iron & ironing board, hair dryer, mini-fridge, coffee maker and personal safe.

Room Categories include:  
32 Oceanview Family Suites  
42 Deluxe Family Rooms  
52 Deluxe Rooms  
337 Club Family Rooms  
88 Club Rooms  
2 Wheelchair Access Rooms

## DINING

**HISPANIOLA - MAIN RESTAURANT**  
An oceanside gourmet dining experience.

**SAMANA**  
A gourmet dining experience prepared by internationally trained chefs.

**CELESTE**  
All-day gourmet dining at this beachside restaurant and bar.

## BARS

**CIELO - MAIN BAR**

**CELESTE - BEACH BAR**

## AMENITIES

Evening entertainment, 2 swimming pools (1 exclusively for Mini Club Med™), boutique\*, internet kiosk\*, Wi-Fi\* and laundry service\*.

## SPA\*

The newly renovated Spa features:  
• Treatment rooms and oceanfront palapas for individual and couples massage treatments  
• Manicures and pedicures  
• Infinity pool exclusively for Spa guests  
• Relaxation Zen lounge

\*Enhanced amenities and programs are available for your convenience at an additional charge.



HAVE A TASTE OF EVERYTHING

CHILDREN WELCOME  
CHILDREN'S CLUBS  
(4 MONTHS-17 YEARS)



# Punta Cana, Dominican Republic



## A taste of what you'll find at Punta Cana

### QUICK FACTS

#### PROPERTY SIZE

75 acres

#### VOLTAGE

110v

#### LANGUAGES

National: Spanish  
In Resort: English, Spanish, French

#### CURRENCY

Dominican Peso

### WEATHER

JAN	FEB	MAR	APR
Low 69	Low 69	Low 71	Low 73
High 86	High 86	High 86	High 87
MAY	JUN	JUL	AUG
Low 75	Low 77	Low 77	Low 77
High 89	High 89	High 91	High 91
SEPT	OCT	NOV	DEC
Low 77	Low 75	Low 73	Low 71
High 91	High 89	High 89	High 87

\*Enhanced amenities and programs are available for your convenience at an additional charge.

### SPORTS & ACTIVITIES

#### LESSONS FOR ALL LEVELS

Archery, circus school, Club Med fitness, flying trapeze, tennis, water aerobics, rollerblading, sailing (single hull) and windsurfing

#### FREE PLAY

Basketball, bocce ball, kayaking, snorkeling, soccer, softball, ping pong, volleyball (beach & hard court), 14 hard-surface tennis courts (9 lit), weight room, water polo and skate park

### SPECIAL PROGRAMS\*

Scuba diving and golf

### CULTURAL AND ADVENTURE ACTIVITIES OFF-SITE\*

- Catamaran trip to the island Saona
- Manati Park
- Visit Santo Domingo by bus
- The Indian River
- Bavaro shopping

### CONFERENCE FACILITIES

Equipment and optional services available:

- Conference A 1167 sq. ft. 28-66 people
- Conference B 1167 sq. ft. 28-66 people
- Conference C 1167 sq. ft. 28-66 people
- Conference A+B+C 3495 sq. ft. 50-216 people
- Resort theater may be available

### TRANSFERS

All transfers included if airfare is purchased from Club Med.

**Airport:** Punta Cana (PUJ), 6 miles from the resort (10 minute transfer)

**Alternate airport:** La Romana (LRM), approximately 50 miles from the resort (1 hour and 30 minute transfer)

**Alternate airport:** Santo Domingo (SDQ), approximately 124 miles from the resort (3 hour transfer)

### CHILDREN'S CLUBS

Baby Welcome Program (0-23 months)

Petit Club Med™ (2-3 years)

Mini Club Med™ (4-10 years)

Passworld (11-17 years)

NEW DECEMBER 2007

Baby Club Med™ (from 4 months)



### OCEANFRONT FAMILY SUITES

Available as:

- Oceanfront
- 775 sq. ft.
- 95 sq. ft. balcony
- King sized bed
- Additional bedding: 2 twin beds
- Maximum occupancy: 4 persons, 1 baby
- 2 bedrooms
- 2 bathrooms: children's side with shower and separate toilet, parent's with bathtub and separate toilet

### AMENITIES INCLUDE:

- Exclusive oceanfront swimming pool
- Private transportation from and to the airport\*
- Welcome gift
- Priority housekeeping
- Turndown service
- Bathrobes and slippers
- Beach towels
- Keiji deluxe toiletries
- Stocked mini fridge (daily replenishment)
- Complimentary internet access with computer
- Room service – continental breakfast only

\*If air travel booked by Club Med

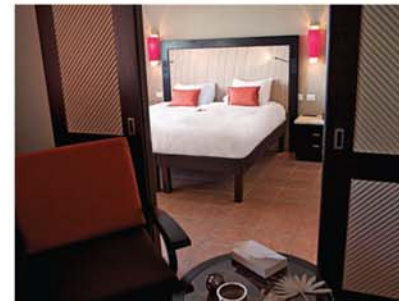


A Luna	N Montañas
B Sol	O La Niña
C Ballena	P Santa María
D Playa	Q Larimar
E Pescado	R Atlantico
F Flora	S Mariposa
G Azul	T Palmera
H La Pinta	U Columbus
I Iguana	V Estrella
J Jardin	W Ovando
K Isla	X Colon
L Costa	Y Cortez
M Chispa	Z Pizarro
	AA Tiara

- 1 Reception
- 2 Samana Restaurant
- 3 Hispaniola Restaurant
- 4 Cielo Bar
- 5 Celeste
- 6 Passworld The Lab
- 7 Mini Club Med™
- 8 Petit Club Med™
- 9 Sports Enfants / Children's Sports / Deportes Para Niños

- 10 Ecole de Cirque / Circus School / Escuela de Circo
- 11 Tennis / Tennis
- 12 Tir à L'arc / Archery / Tiro al Arco
- 13 Skate Park
- 14 Football / Soccer / Fútbol
- 15 Basketball
- 16 Petanque / Bocce Ball
- 17 Fitness Palapa
- 18 Salle de Musculation / Weight Room / Sala de Musculación

- 19 Voile / Sailing / Vela
- 20 Piscine / Pool / Piscina
- 21 Mini Club Med™ Piscina / Mini Club Med™ Pool / Piscine du Mini Club Med™
- 22 Spa
- 23 Discovery Center
- 24 Boutique
- 25 Infirmerie / Infirmary / Enfermeria
- 26 Blanchisserie / Laundry / Lavanderia
- 27 Theatre / Teatro



### DELUXE ROOMS

Available as:

- Standard
- 360 sq. ft.
- 63 sq. ft. balcony
- King sized bed
- Maximum occupancy: 2 persons, 1 baby
- Deluxe and club family rooms may adjoin to accommodate 7 persons